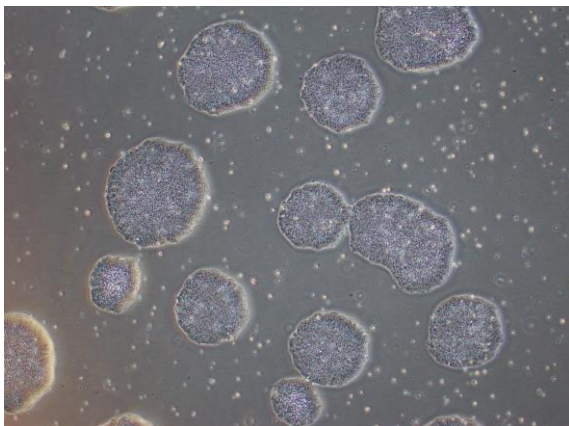
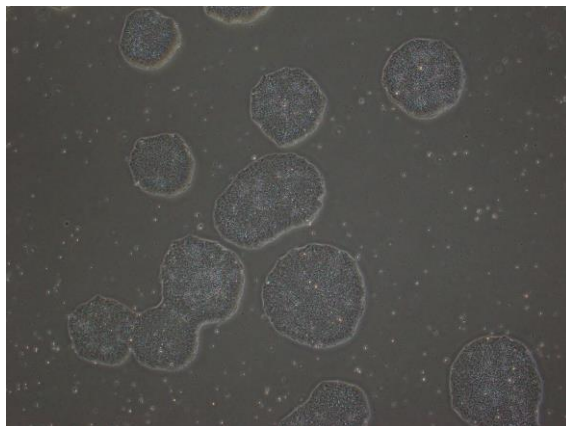


【 CiRA-j-1533 】 Morphology of iPSC colonies

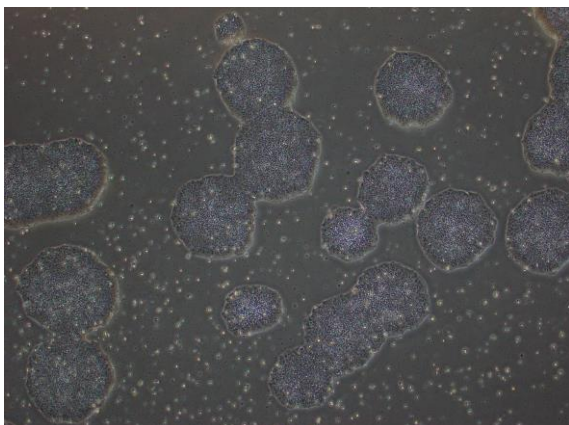
CiRA-j-1533-A: passage-3



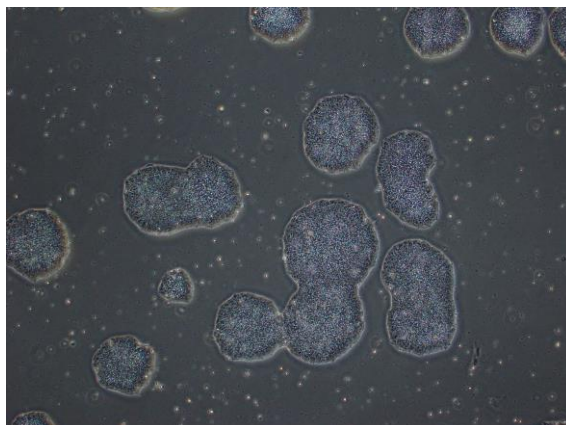
CiRA-j-1533-B: passage-3



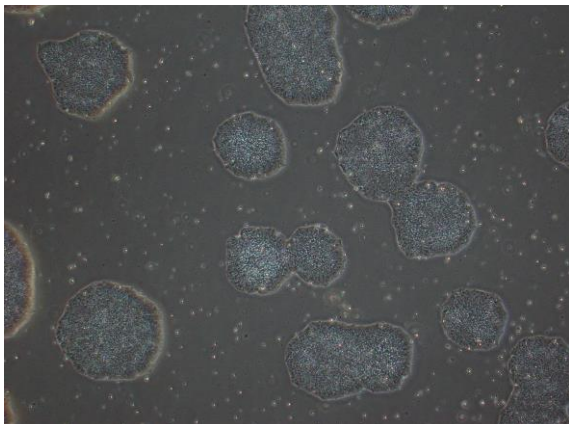
CiRA-j-1533-C: passage-3



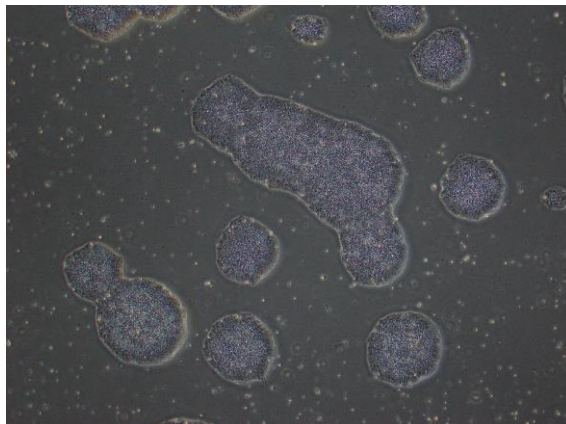
CiRA-j-1533-D: passage-3



CiRA-j-1533-E: passage-3



CiRA-j-1533-F: passage-3



(All images were captured at 4x magnification)